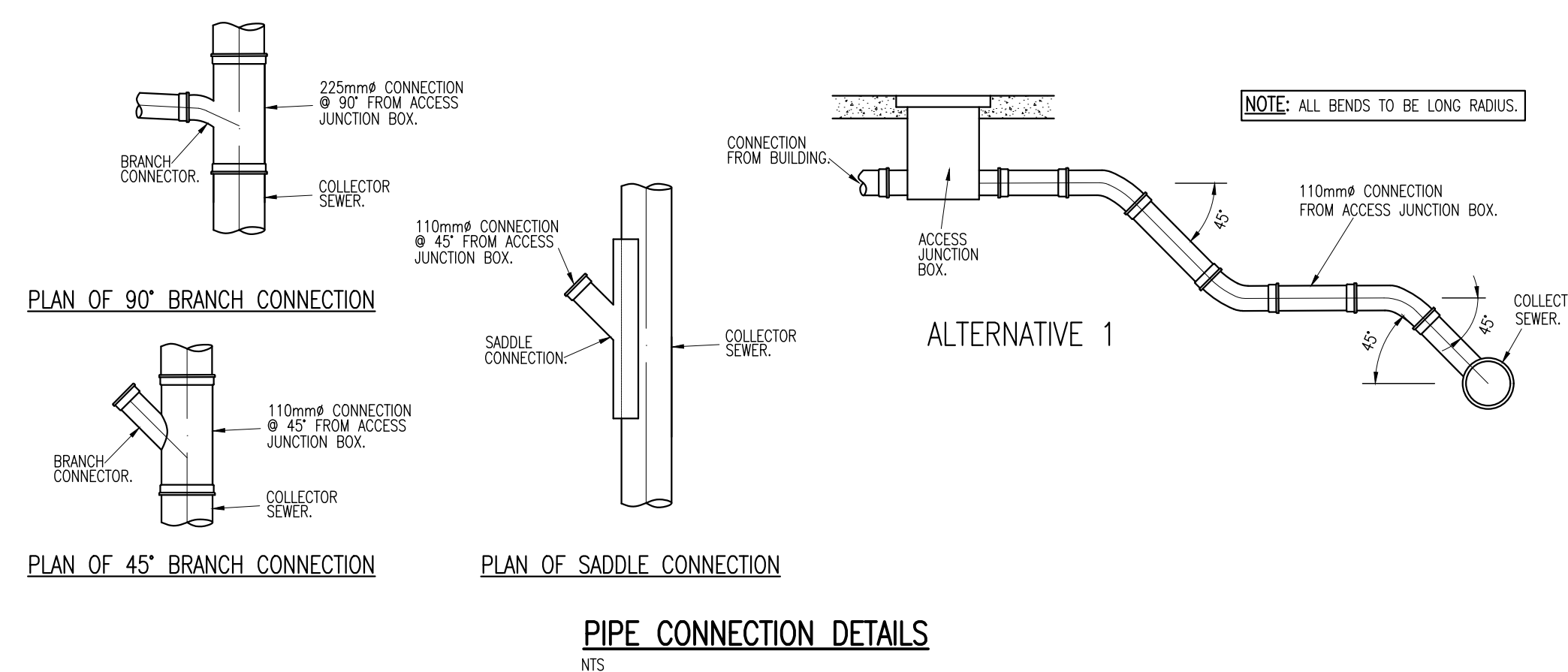


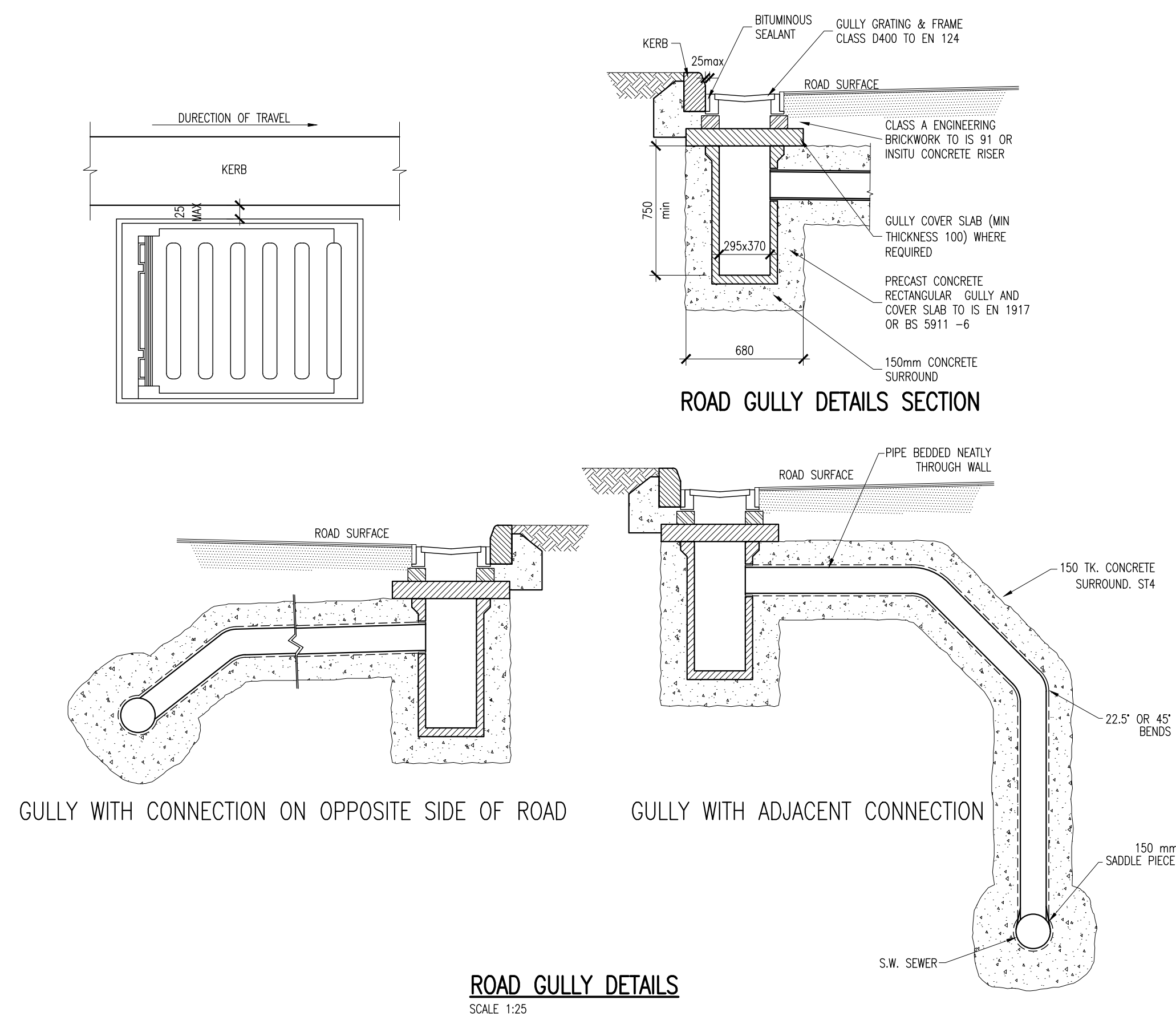
PETROL INTERCEPTOR DETAIL
SCALE 1:25



PIPE BEDDING DETAILS

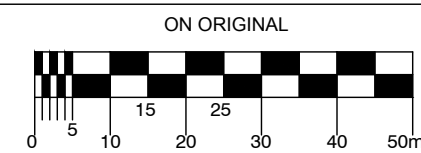


PIPE CONNECTION DETAILS



ROAD GULLY DETAILS

© COPYRIGHT OF THIS DRAWING IS RESERVED BY DBFL CONSULTING ENGINEERS. NO PART SHALL BE REPRODUCED OR TRANSMITTED WITHOUT THEIR WRITTEN PERMISSION.



- NOTES:**
1. WHERE ROCKS OR OTHER HARD TRENCH BOTTOM IS ENCOUNTERED, THE FIGURE DENOTED BY * IS TO BE DOUBLED.
 2. TYPE 1 GRANULAR MATERIAL :
BROKEN STONE OR GRAVEL TO PASS 10mm SIEVE AND BE RETAINED ON 5mm SIEVE.
 3. TYPE 2 GRANULAR MATERIAL :
BROKEN STONE OR GRAVEL TO PASS 10mm – 25mm SIEVE, ACCORDING TO PIPE SIZE, (SEE TABLE) AND BE RETAINED ON 5mm SIEVE.
 4. CLAUSE 601 S.R.W. BACKFILL :
UNIFORM FINELY COMPACTED MATERIAL FREE FROM TREE ROOTS, VEGETABLE MATTER, BUILDING DEBRIS, AND FROZEN SOIL AND EXCLUDING CLAY LUMPS RETAINED ON A 75mm SIEVE AND STONES RETAINED ON A 37.5mm SIEVE.
 5. RIGID PIPES SHALL MEAN CAST OR SPUN IRON, CONCRETE OR CLAY.
 6. RIGID GRATINGS AND FRAMES SHALL COMPLY WITH THE REQUIREMENTS OF I.S./E.N./124 1994. GULLIES SHALL BE CLASS D400.
 7. GULLY WALLS SHALL BE CONSTRUCTED IN CLASS 30N/mm² PRECAST OR INSITU CONCRETE OR ALTERNATIVELY IN SOLID CONCRETE BLOCKS DESIGNATED S10, STRENGTH 10N/mm²
 8. ALL PIPES TO BE BEDDED IN ACCORDANCE WITH MANUFACTURERS RECOMMENDATIONS
 9. SURFACE WATER SEWERS TO BE CLASS H CONCRETE TO IS EN1916 AND IS 6 2004.

A	19/12/17	FINAL SUBMISSION, AN BORD PLEANALA	PPK	DMW
REV.	DATE	DESCRIPTION	BY	CHKD
PLANNING				
DESIGNED	DG	PREPARED	PPK	
DATE	JULY 2017	CHECKED	DMW	



DUBLIN OFFICE Ormond House,
Upper Ormond Quay, Dublin 7, Ireland.
PHONE +353 1 400 4000
FAX +353 1 400 4050

WATERFORD OFFICE Unit 2, The Chandlery
1-2 O'Connell Street, Waterford, Ireland
PHONE +353 51 309 500
FAX +353 51 844 913

DBFL Consulting Engineers EMAIL: info@dbfl.ie SITE: www.dbfl.ie

PROJECT
FORTUNESTOWN LANE &
GARTERS LANE RESIDENTIAL
DEVELOPMENT

DRG. TITLE
TYPICAL DRAINAGE
DETAILS SHEET 2 OF 3

CLIENT
GREENACRE RESIDENTIAL DAC

SCALE	AS SHOWN @A1	FILE REF.	162073-3060
DRG. NO.	162073-3061		A