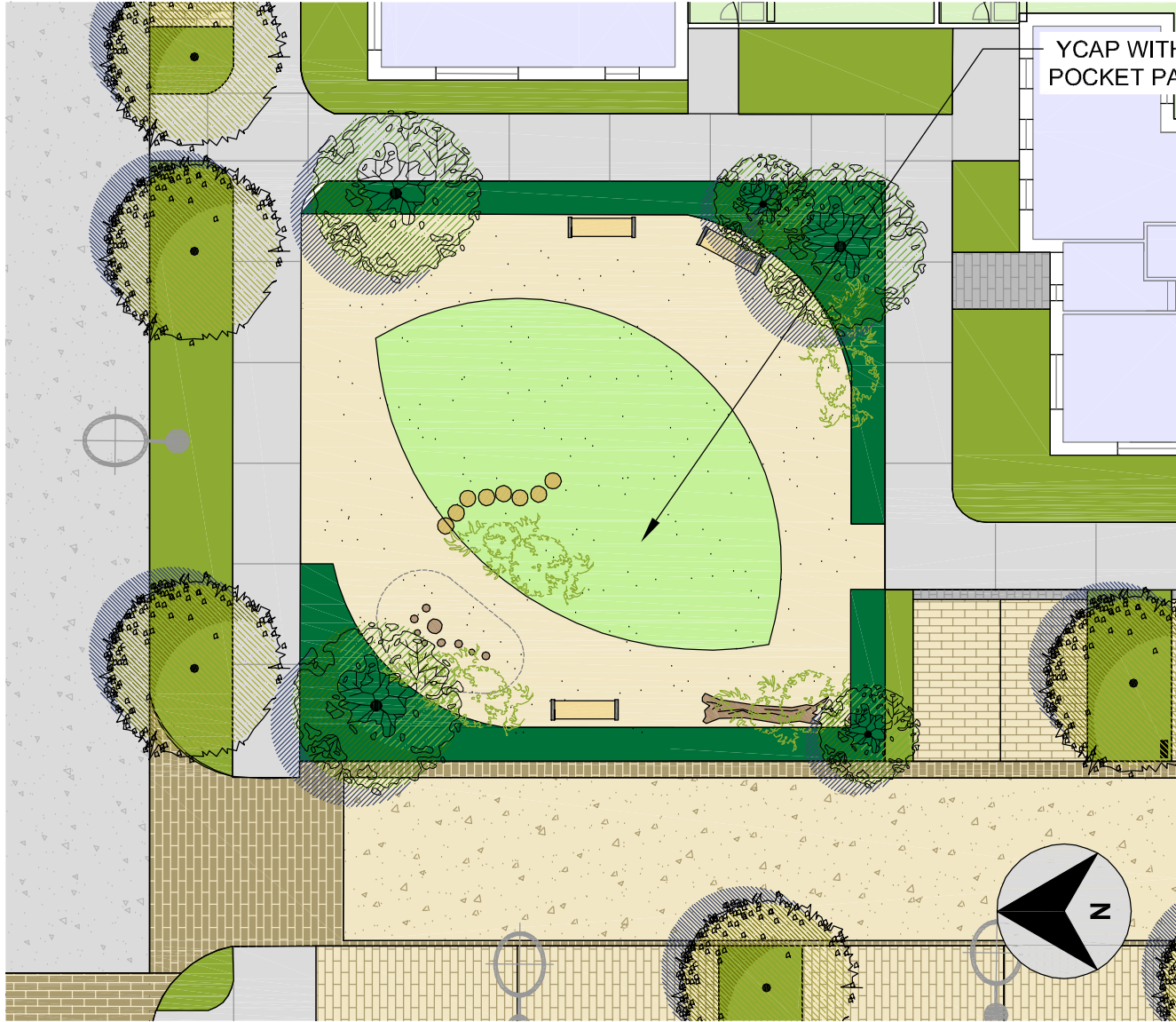
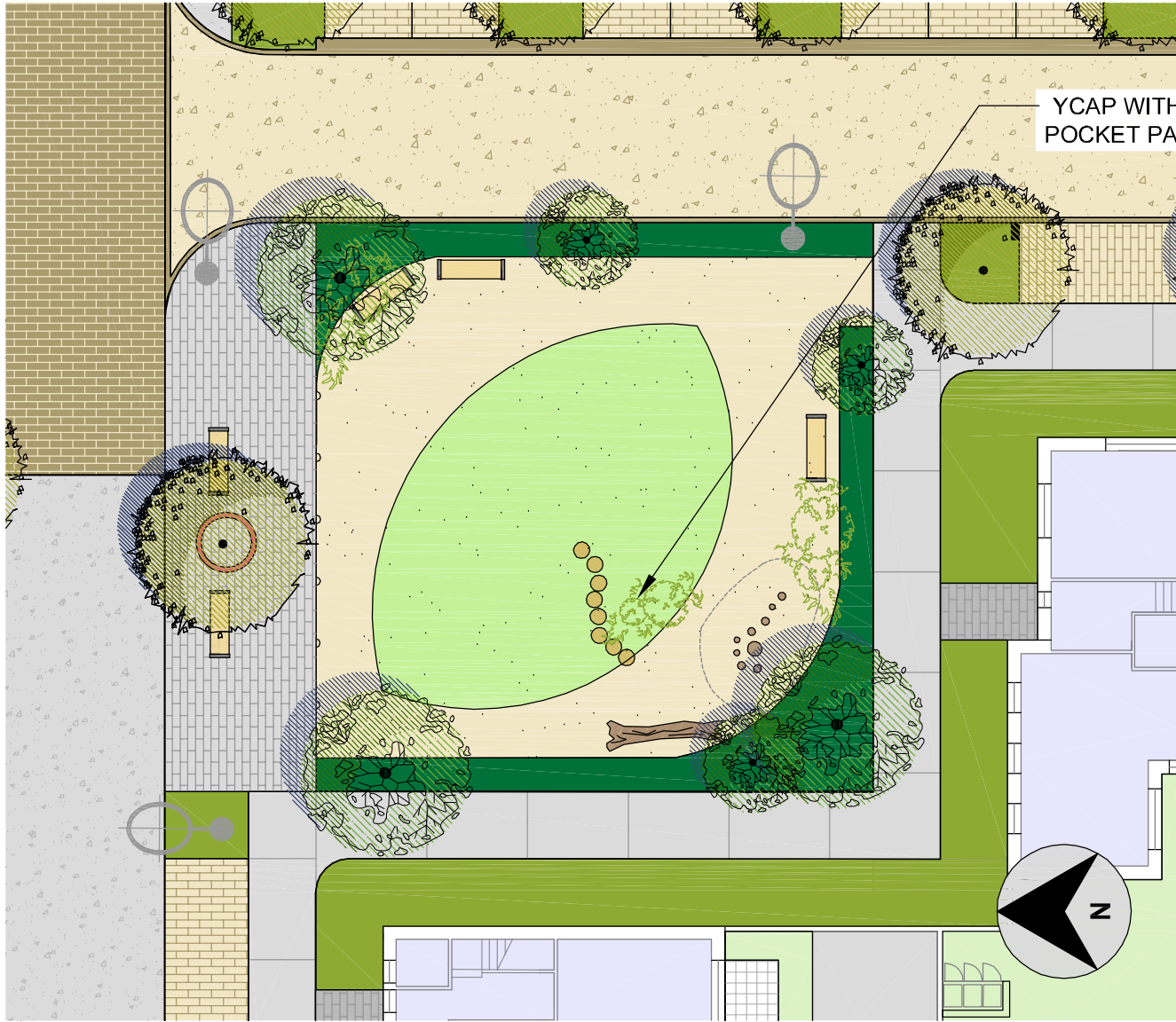


NEIGHBORHOOD PARK - PLAN VIEW  
1:200@ A1



POCKET PARK A WITH YCAP - PLAN VIEW  
1:200@ A1



POCKET PARK B WITH YCAP - PLAN VIEW  
1:200@ A1



POCKET PARK C WITH YCAP - PLAN VIEW  
1:200@ A1

### LEGEND

- Footpath
- Parking Bays
- Feature Paving
- Traffic Calming
- Private Treshold Paving
- Road/Shared Surface
- Proposed Street Trees
- Proposed Parkland Trees
- Shrub & Hedge Planting
- Seating & Street Lighting
- Natural play elements including logs, sensory planting, boulders
- Play Surface
- Play Equipment

NOTE:  
YCAP's provided for toddlers and young children up to age of 6 - providing them with a stimulating safe environment for play.

LEAP provided for children up to 8 years with 5 pieces of installed equipment eg slide, tunnels, see-saw etc and natural play elements.



Feature Pocket Parks with Natural Play for Toddlers  
-Homezone A



Natural play elements in Neighborhood Park

NOTE: for details of materials & planting see masterplan  
-15422-2-100 or 15422-2 -100.1

B	17/12/08	LAYOUT
A	11/20/17	LAYOUT
REV	DATE	AMENDMENT

### CUNNANE STRATTON REYNOLDS LAND PLANNING & DESIGN

DUBLIN OFFICE  
3 MOLESWORTH PLACE DUBLIN 2  
TEL 01 661 0419 FAX 01 661 0431  
EMAIL: info@csrlandplan.ie

PROJECT:  
RESIDENTIAL DEVELOPMENT AT  
FORTUNESTOWN LANE,  
SAGGART.  
CLIENT:  
GREENACRE RESIDENTIAL DAC  
DRAWING:

### NEIGHBORHOOD & POCKET PARKS

DATE:	APRIL 2017
SCALE:	1:200 @A1
DRAWN:	DM
CHECKED:	DOL
DRAWING NO:	15422-2-107